

# **CITY OF BURNSVILLE WELLHEAD PROTECTION PLAN IMPLEMENTATION**

**Legislative Water Commission  
6-15-17**

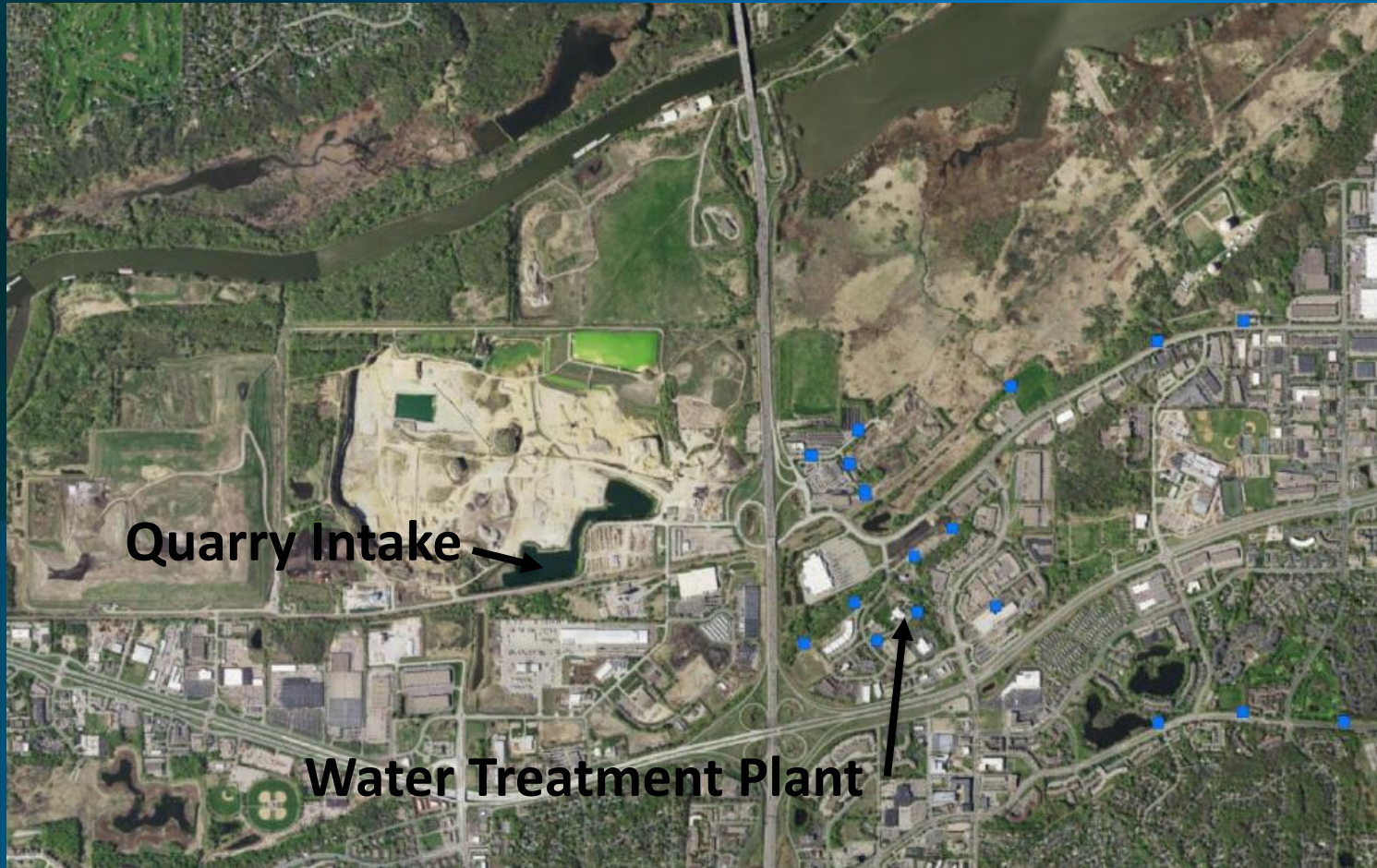
# PRESENTATION

- 1) City of Burnsville Water Supply
- 2) Why is Wellhead and Source Water Protection so important in Burnsville?
- 3) Implementation of Wellhead Protection Plan
- 4) Drinking Water Supply Overlay District Strategy
- 5) Questions

# City Water Use

- Annually, the City of Burnsville pumps more than 3.2 billion gallons of water. Service area includes approximately 90,000 residents (includes Savage)
- 1.1 billion gallons comes from quarry intakes, with the balance supplied by 17 wells.
- In 2016, Burnsville provided 89% (about 764 MG) of Savage's water via a water use agreement (year 9 of agreement).
- On peak days the City system pumps more than 20 MG

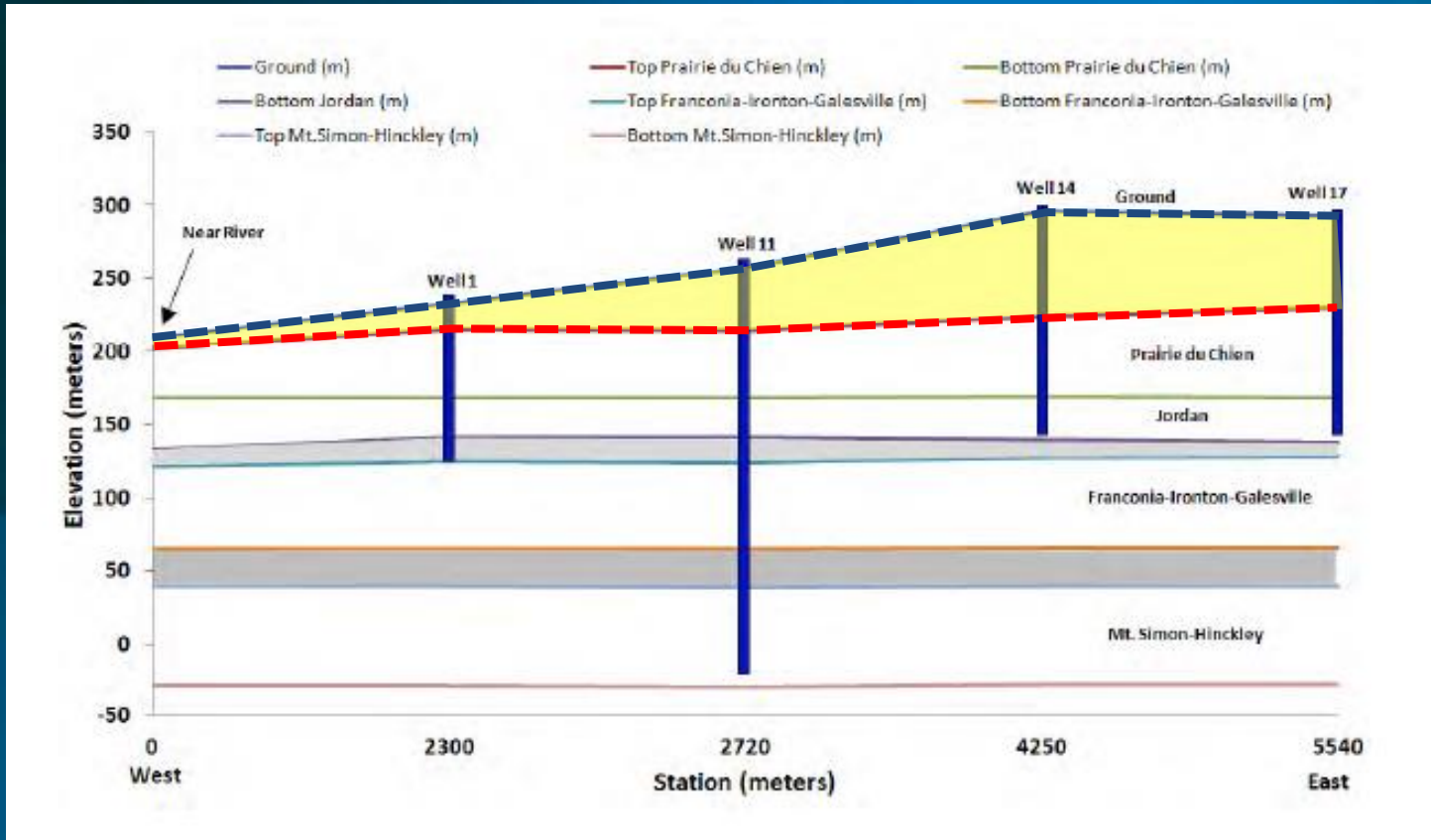
# Drinking Water Supply Sources



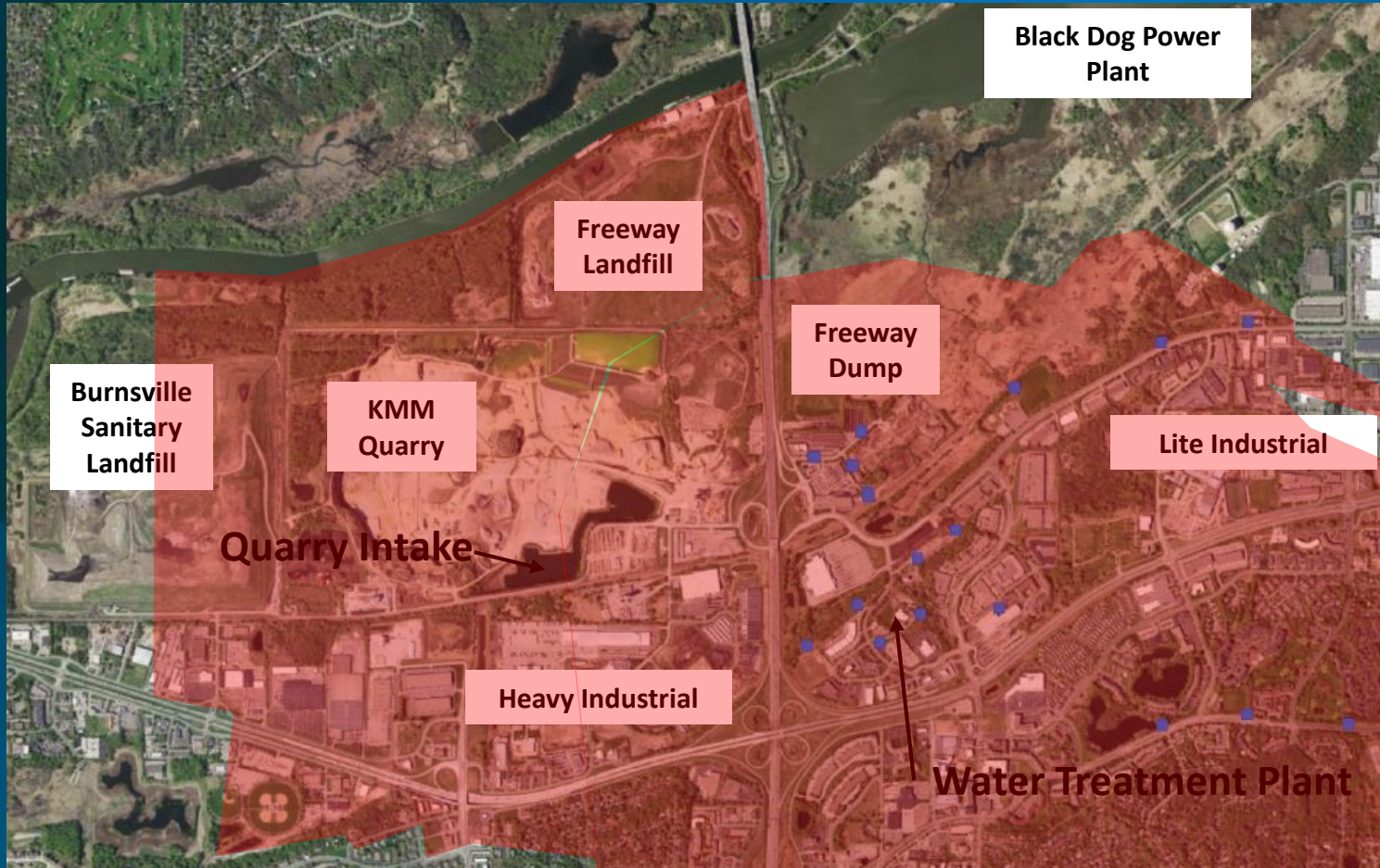
# Why Did Burnsville Need Enhanced Water Supply Protection?

- Burnsville's drinking water aquifers and quarry sources are susceptible to potential pollution from regulated substances in certain areas of the City.
  - Fully developed City
  - Heavy and lite industrial uses in close proximity to drinking water sources.
  - 1 open and 2 closed landfills/dumps, power plant, rail line and quarry in close proximity to drinking water sources.
- Maintain Consumer Confidence
- An overlay district would provide a framework for verifying existing regulations through inspection program.

# Aquifer Susceptibility



# Uses



# WELLHEAD PLAN PROTECTION GOALS

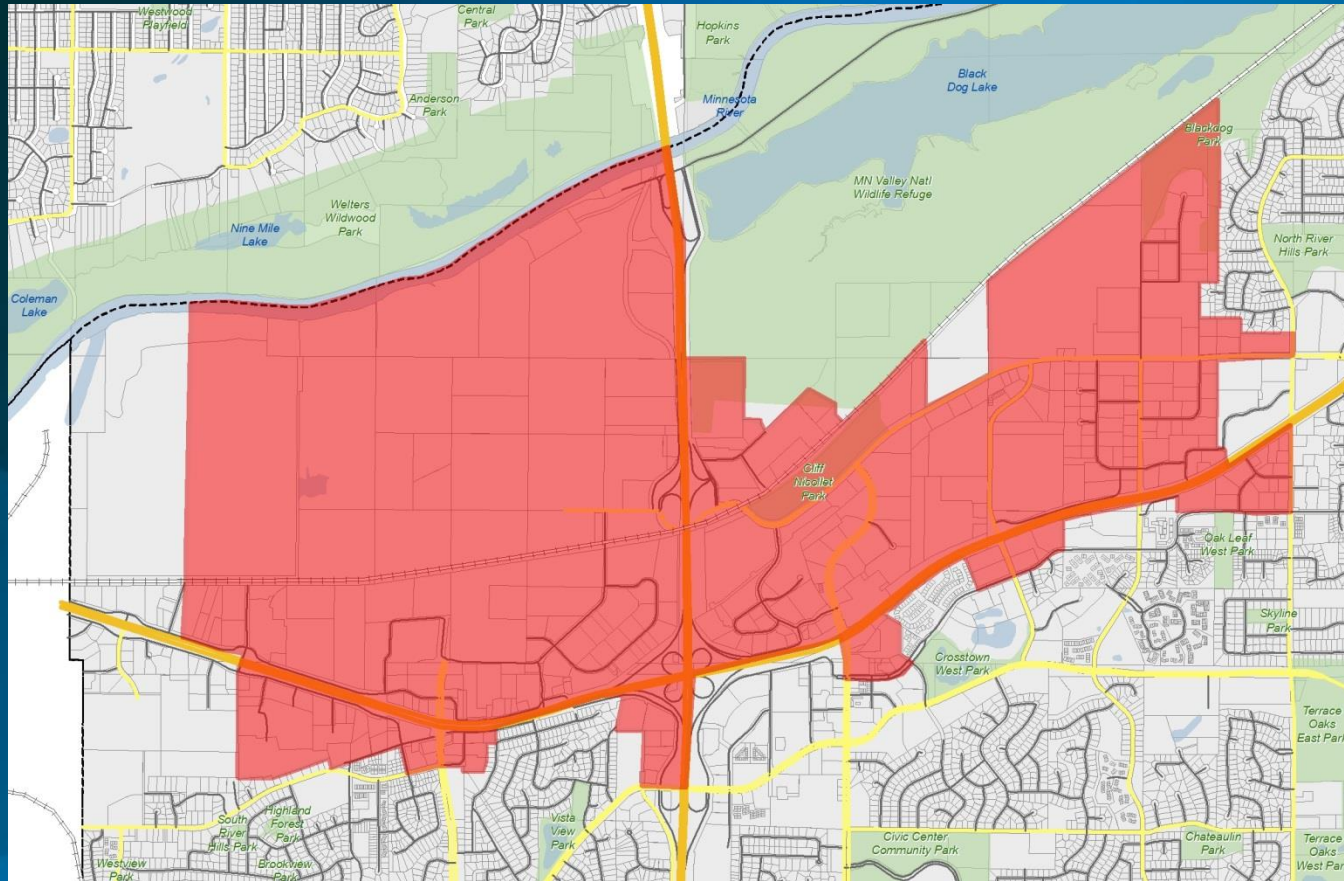
- The City will continue to meet or exceed all State and Federal water quality standards.
- The City will promote protection of vulnerable source water aquifer through management of high risk potential contaminant sources within the DWSMA and raising public awareness of source water protection issues.
- The City will keep track potential contaminant sources in order to adjust their management activities to meet community's needs in the years between WHPP development.



# Drinking Water Protection Overlay District Strategy

- 1) Model area groundwater to better understand potential risks. ✓ **DONE**
- 2) Implement proactive testing protocol to ensure pollutants aren't present. ✓ **DONE**
- 3) Develop long term management strategy. ✓ **ONGOING**
- 4) Implement 2 part ordinance. ✓ **ONGOING**

# Proposed Overlay District



# Questions?

- Contact Steve Albrecht at 952-895-4544  
[steve.albrecht@burnsvillemn.gov](mailto:steve.albrecht@burnsvillemn.gov)
- Information available on City Website at:  
[www.burnsville.org/drinkingwaterprotection](http://www.burnsville.org/drinkingwaterprotection)